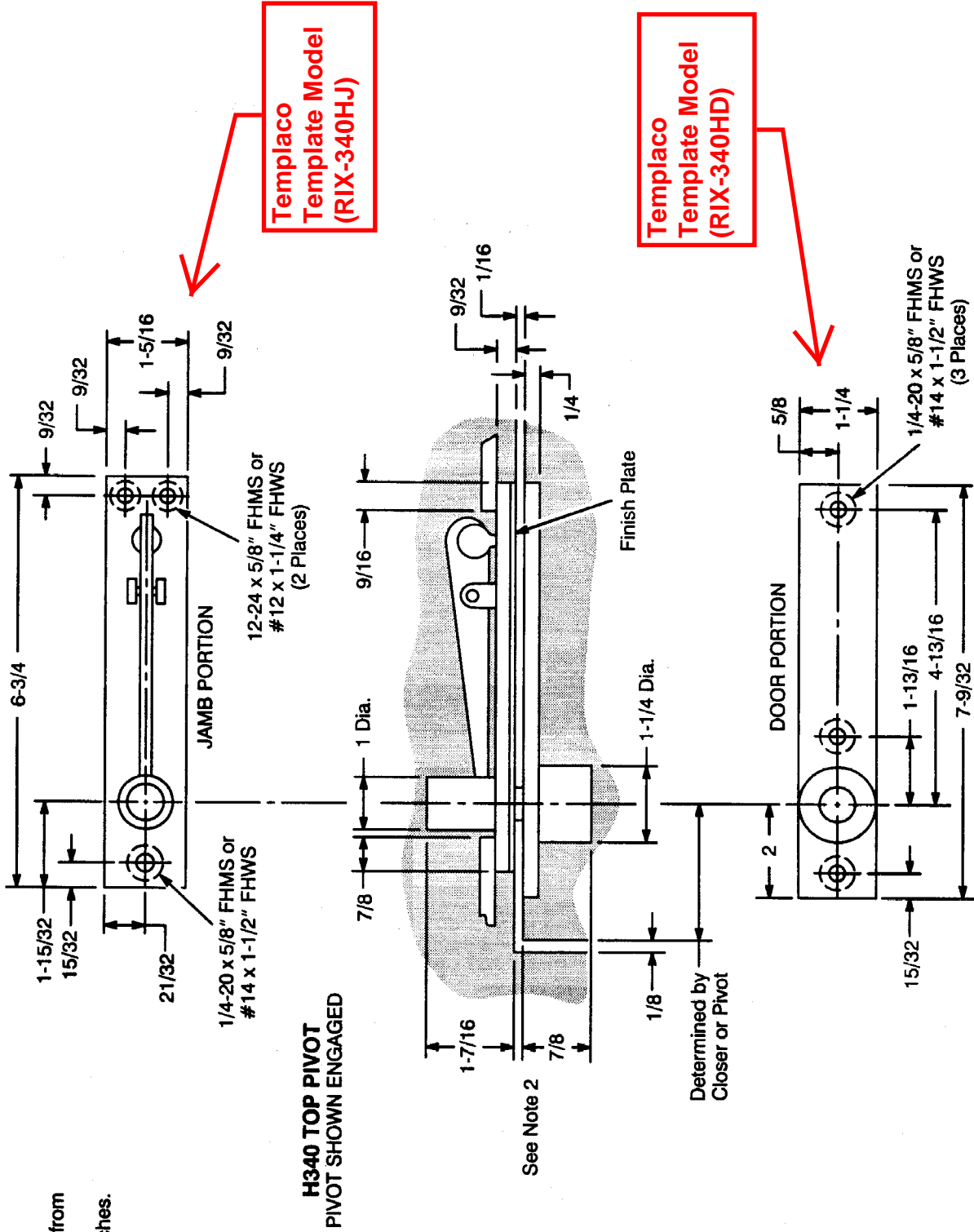


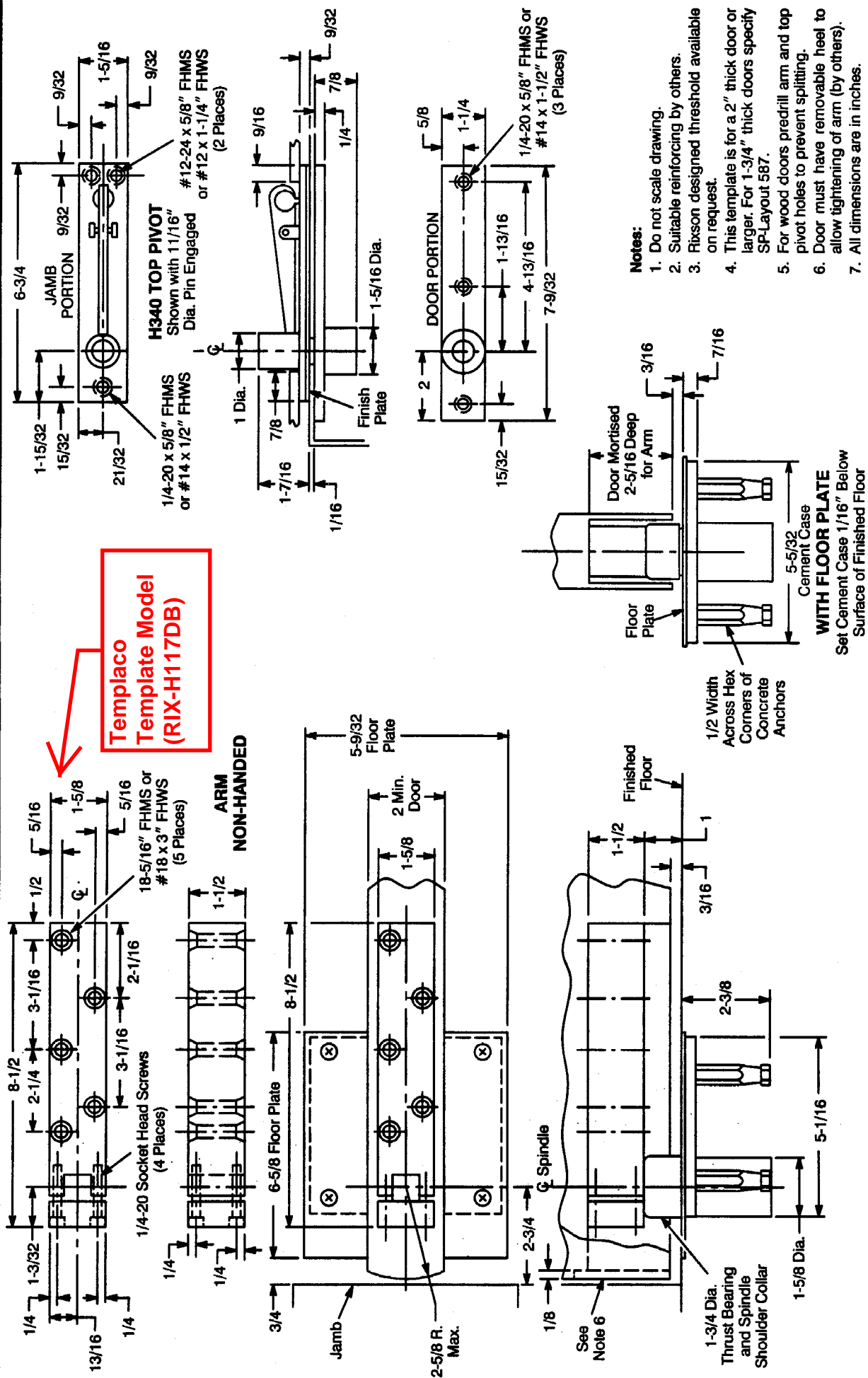
Notes:

- 1. Do not scale drawing.
- 2. Minimum pivot point from heel edge of door 3/4".
- 3. All dimensions are in inches.



**Top Pivot
H340
Center Hung**

RIXSON™
Rixson Specialty Door Controls
www.rixson.com
Rixson Draw # TP40240
DATE **6-94**



Template Model
 Template Model
 (RIX-H117DB)

Notes:

1. Do not scale drawing.
2. Suitable reinforcing by others.
3. Rixson designed threshold available on request.
4. This template is for a 2" thick door or larger. For 1-3/4" thick doors specify SP-Layout 587.
5. For wood doors predrill arm and top pivot holes to prevent splitting.
6. Door must have removable heel to allow tightening of arm (by others).
7. All dimensions are in inches.



Rixson Specialty Door Controls
 WWW.RIXSON.COM

Rixson Drawing # PS30110

DATE
9-95

H117-3/4 Pivot Set
Center Hung for Heavy Doors
For Minimum 2" Thick Doors